



 Lexmark™

**XM1242**

Reliability. Security. Productivity.



XM1242 with optional tray



# Lexmark XM1242

The XM1242 prints at up to 40 pages per minute (A4)\* and features fax, two-sided scanning and copy functions powered by a multi-core processor and a full gigabyte of memory. Connect with standard USB and ethernet or optional Wi-Fi. Plus, 350 sheets of standard input can grow to 900 with optional trays.



## Get more done

- ▶ Fax, print, copy and scan with the power of a multi-core processor and 1 GB of memory.
- ▶ Print at up to 40 pages per minute and scan up to 42 images per minute.
- ▶ Intuitive 4.3-inch [10.9 cm] colour touch screen offers smooth, tablet-like interaction.
- ▶ Built-in productivity apps save time and improve efficiency.

## Ready when you are

- ▶ Long-life fuser and imaging components extend uptime.
- ▶ Unison™ Toner replacement cartridges deliver up to 21,000 pages\*\* of high-quality printing.
- ▶ Maximum input capacity of 900 pages means fewer interruptions.
- ▶ Durable metal frame is designed for longevity.

## Robust, built-in security

- ▶ Lexmark's full-spectrum security architecture helps keep your information safe—on the document, the device, over the network, and everywhere in between.
- ▶ A range of embedded features harden device against attacks.
- ▶ Go beyond standard Confidential Print with optional security solutions like Print Release.
- ▶ Keypoint Intelligence - Buyers Lab honoured Lexmark with a prestigious BLI PaceSetter award for Document Imaging Security\*\*\*.



## Built for planet earth

- ▶ Energy management features reduce power consumption in active use or sleep mode.
- ▶ Standard two-sided printing saves paper.
- ▶ Use of post-consumer recycled content in manufacturing saves natural resources.
- ▶ Device is rated EPEAT® Silver and ENERGY STAR® certified.
- ▶ Recycle cartridges through the award-winning Lexmark Cartridge Collection Program (LCCP).

\*Print and copy speeds measured in accordance with ISO/IEC 24734 and ISO/IEC 24735 respectively (ESAT). For more information see: [www.lexmark.com/ISOspeeds](http://www.lexmark.com/ISOspeeds).

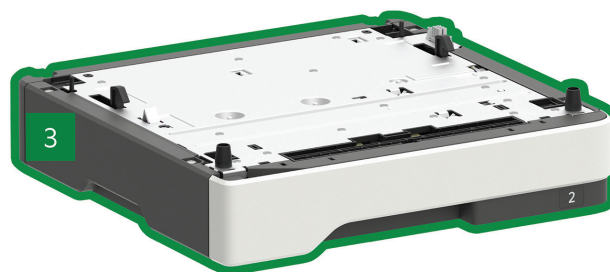
\*\*Average yield based on approximately 5% print coverage

\*\*\*Award based on North America and/or Western Europe data

# Lexmark XM1242



or



- 1 Multifunction product with 4.3-inch (10.9 cm) colour touch screen

18.4 x 15.7 x 16.9 inches  
467 x 399 x 429.5 mm

- 2 550-sheet tray  
5 x 15.7 x 14.7 inches  
126 x 389 x 374 mm

- 3 250-sheet tray  
3.7 x 15.7 x 14.7 inches  
95 x 389 x 374 mm

■ Standard

■ Optional

Supports one optional tray.

© 2018 Lexmark. All rights reserved.

Lexmark, the Lexmark logo and Unison are trademarks of Lexmark International, Inc., registered in the United States and/or other countries. AirPrint and the AirPrint Logo are trademarks of Apple, Inc. ENERGY STAR® is a U.S. registered mark. EPEAT® is a trademark of EPEAT, Inc. in the United States and other countries. Google Cloud Print is a trademark of Google, Inc. MOPRIA®, the Mopria® Logo™ and the Mopria® Alliance logos are trademarks, service marks, and certification marks of Mopria Alliance, Inc. in the United States and other countries. All other trademarks are the property of their respective owners.

This product includes software developed by the OpenSSL Project for use in the Open SSL Toolkit ([http:// www.openssl.org/](http://www.openssl.org/)).

Product specifications		Lexmark XM1242
<b>Print</b>		
Display	Lexmark e-Task 4.3-inch (10.9 cm) colour touch screen	
Print Speed: Up to <sup>6</sup>	Black: 40 ppm	
Time to First Page: As fast as	Black: 6.25 seconds	
Print Resolution	Black: 1200 Image Quality, 1200 x 1200 dpi, 2400 Image Quality, 600 x 600 dpi	
Memory / Processor	Standard: 1024 MB / Maximum: 1024 MB / Dual Core, 1000 MHz	
Hard Disk	Not Available	
Recommended Monthly Page Volume <sup>2</sup>	1000 - 10000 pages	
Maximum Monthly Duty Cycle: Up to <sup>3</sup>	100000 pages per month	
<b>Copy</b>		
Copy Speed: Up to <sup>6</sup>	Black: 40 cpm	
Time to First Copy: as fast as	Black: 6.25 seconds	
<b>Scan</b>		
Scanner Type / ADF Scan	Flatbed scanner with ADF / RADF (reversing Duplex)	
A4/Ltr Duplex Scan Speed: Up to / Duplex Scan Speed: Up to	Black: 20 / 20 sides per minute / Colour: 10.5 / 10.5 sides per minute	
A4/Ltr Simplex Scan Speed: Up to / Scan Speed: Up to	Black: 42 / 45 sides per minute / Colour: 20 / 22 sides per minute	
ADF Paper Input Capacity: Up to	50 pages 75 gsm bond	
<b>Fax</b>		
Modem Speed	ITU T.30, V.34 Half-Duplex, 33.6 Kbps	
<b>Supplies<sup>7</sup></b>		
Laser Cartridge Yields (up to) <sup>1</sup>	21,000-page Cartridge	
Imaging Unit Estimated Yield: Up to	60000 pages, based on 3 average letter/A4-size pages per print job and ~ 5% coverage	
Cartridge(s) Shipping with Product <sup>8</sup>	3,000-page Starter Return Program Toner Cartridge	
<b>Paper Handling</b>		
Included Paper Handling	250-Sheet Input, 100-Sheet Multipurpose Feeder, 150-Sheet Output Bin, Integrated Duplex	
Optional Paper Handling	250-Sheet Tray, 550-Sheet Tray, 550-Sheet Lockable Tray	
Paper Input Capacity: Up to	Standard: 350 pages 75 gsm bond / Maximum: 900 pages 75 gsm bond	
Paper Output Capacity: Up to	Standard: 150 pages 75 gsm bond / Maximum: 150 pages 75 gsm bond	
Media Types Supported	Card Stock, Envelopes, Paper Labels, Plain Paper, Transparencies, Refer to the Card Stock & Label Guide.	
Media Sizes Supported	10 Envelope, 7 3/4 Envelope, 9 Envelope, A4, A5, DL Envelope, Executive, Folio, JIS-B5, Legal, Letter, Statement, Universal, Oficio, A6	
<b>General Information<sup>4</sup></b>		
Standard Ports	USB 2.0 Specification Hi-Speed Certified (Type B), Gigabit Ethernet (10/100/1000), Front USB 2.0 Specification Hi-Speed Certified port (Type A)	
Optional Network Ports	Marknet N8372 WiFi Option	
Noise Level: Operating	Print: 55 dBA / Copy: 55 dBA / Scan: 55 dBA	
Specified Operating Environment	Humidity: 8 to 80% Relative Humidity, Temperature: 10 to 32°C (50 to 90°F), Altitude: 0 - 5000 meters	
Size (mm - H x W x D) / Weight	467 x 399 x 429.5 mm / 19.4 kg	

All information in this brochure is subject to change without notice. Lexmark is not liable for any errors or omissions.



## Advanced Print Scan Solutions

Unit 3 / 74 Thomsons Rd  
Keilor Park Victoria 3042  
1300 226 995  
[www.apssolutions.com.au](http://www.apssolutions.com.au)

<sup>1</sup>Average yield based on approximately 5% print coverage. <sup>2</sup>"Recommended Monthly Page Volume" is a range of pages that helps customers evaluate Lexmark's product offerings based on the average number of pages customers plan to print on the device each month. Lexmark recommends that the number of pages per month be within the stated range for optimum device performance, based on factors including: supplies replacement intervals, paper loading intervals, speed, and typical customer usage. <sup>3</sup>"Maximum Monthly Duty Cycle" is defined as the maximum number of pages a device could deliver in a month using a multishift operation. This metric provides a comparison of robustness in relation to other Lexmark printers and MFPs. <sup>4</sup>Printers are sold subject to certain license/agreement conditions. See [www.lexmark.com/](http://www.lexmark.com/) printerlicense for details. <sup>5</sup>Actual Yield may vary based on other factors such as device speed, paper size and feed orientation, toner coverage, tray source, percentage of black-only printing and average print job complexity. <sup>6</sup>Print and copy speeds measured in accordance with ISO/IEC 24734 and ISO/IEC 24735 respectively (ESAT). For more information see: [www.lexmark.com/ISOspeeds](http://www.lexmark.com/ISOspeeds). <sup>7</sup>Product functions only with replacement cartridges designed for use in a specific geographical region. See [www.lexmark.com/regions](http://www.lexmark.com/regions) for more details. <sup>8</sup>Average Continuous Cartridge Yield in one-sided (simplex) mode 3,000 standard pages. Declared yield value in accordance with ISO/IEC 19752.